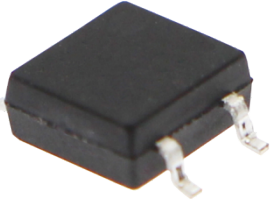
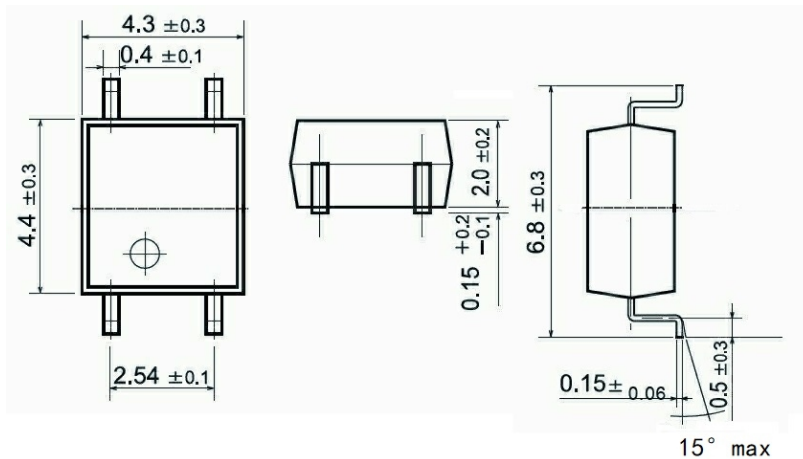
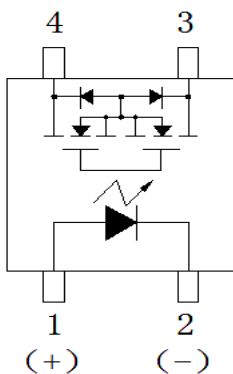


产品图片	Features 产品特性	Application 应用
 <p>SOP4</p>	<ul style="list-style-type: none"> ● Contact Form 触点形式 1a ● Load Voltage 输出电压 40V ● Load Current 输出电流 2.0A ● Operation LED Current 二极管导通电流 3.0mA ● On-Resistance 导通电阻 0.035Ω ● Output Capacitance 输出电容 240pF ● Low Off-State Leakage Current 漏电流 $1.0 \mu A$ 	<ul style="list-style-type: none"> ● Electric Vehicle 新能源电动汽车 ● Automatic Test Equipment 自动检测设备 ● Telephone Equipment 通信设备 ● Sensing Equipment 传感设备 ● Security Equipment 安全设备 ● I/O Modules I/O 模块 ● Modem 调制解调器

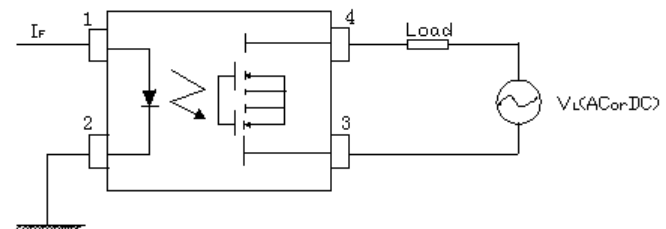
Dimensions 外形尺寸



Terminal Identification 引脚标识



Wiring Diagram 接线图





Technical parameters 技术参数 (Ambient Temperature 25°C)

I/O Absolute Maximum Ratings 输入输出电气参数最大值

	Item 项目	Symbol 符号	Value 数值
Operating Temperature 工作温度		T _{OPR}	-40°C~+85°C
Storage Temperature 储存温度		T _{STG}	-40°C~+100°C
Input 输入	Continuous LED Current 工作电流	I _F	50mA
	Peak LED Current LED 峰值电流 (f=100Hz, Duty=1%)	I _{FP}	500mA
	LED Reverse Voltage 反向电压	V _R	5V
	Input Power Dissipation 输入功耗	P _{IN}	75mW
Output 输出	Load Voltage 输出电压	V _L	40V (AC peak or DC)
	Load Current 输出电流	I _L	2.0A
	Peak Load Current 峰值输出电流 ((1ms, 1 shot)	I _{PEAK}	5.0A
	Output Power Dissipation 输出功耗	P _{OUT}	350mW
Total Power Dissipation 总功耗		P _T	400mW
I/O Breakdown Voltage 输入输出间隔离电压		V _{I/O}	1500Vrms
I/O Breakdown Voltage 输入输出间隔离电压 (加注 H)		V _{I/O}	3750Vrms

Electrical Specifications 输入输出电气参数

	Item 项目	Symbol I 符号	MIN. 最小值	TYP. 典型值	MAX. 最大值	Units 单位	Conditions 条件
Input 输入	LED Forward Voltage 正向电压	V _F	1.0	1.37	1.5	V	I _F =10mA
	Operation LED Current 接通电流	I _{F ON}		0.7	3.0	mA	
	Recovery LED Voltage 关断电压	V _{F OFF}	0.5	1.1		V	
Output 输出	On-Resistance 导通电阻	R _{ON}		0.035	0.06	Ω	I _F =5mA, I _L =Rating within 1sec.
	Off-State Leakage Current 漏电流	I _{LEAK}			1.0	μA	V _L =40V
	Output Capacitance 输出端容量	C _{OUT}		240		pF	V _L =0V, f=1MHz
Time parameters 时间参数	Turn-On Time 接通时间	T _{ON}		1.0	2.5	ms	I _F =5mA I _L =Rating
	Turn-Off Time 关断时间	T _{OFF}		0.05	0.2	ms	
I/O 输入输出	I/O Insulation Resistance 绝缘电阻	R _{I/O}	10 ⁹			Ω	
	I/O Capacitance 隔离电容	C _{I/O}		1.3		pF	f=1MHz

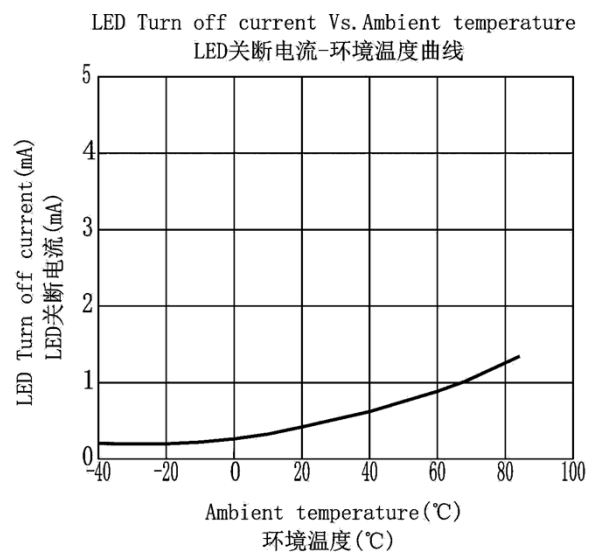
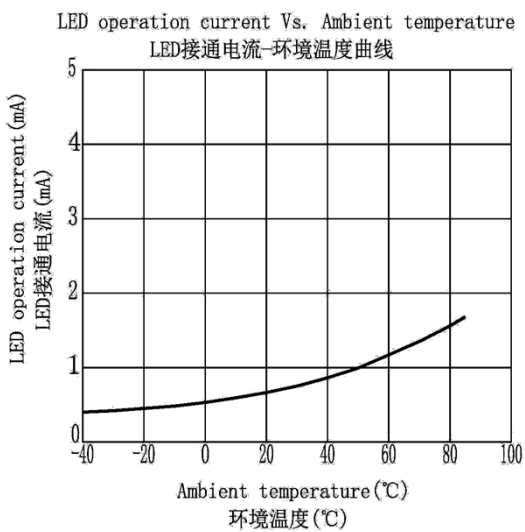
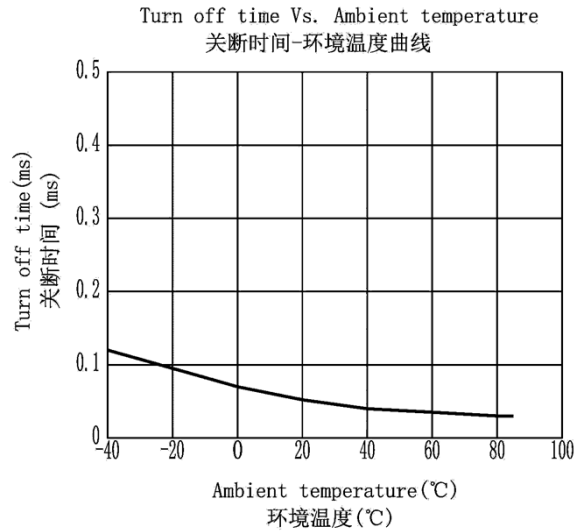
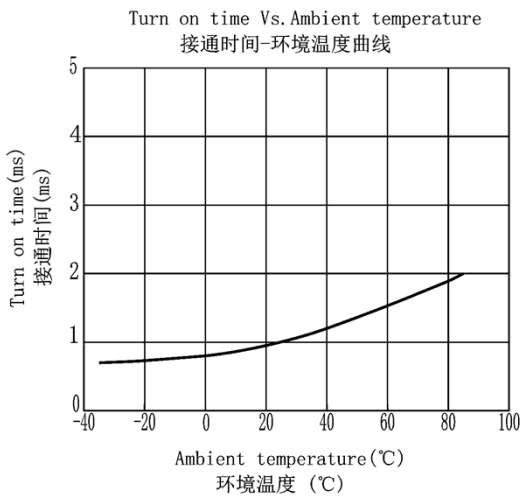
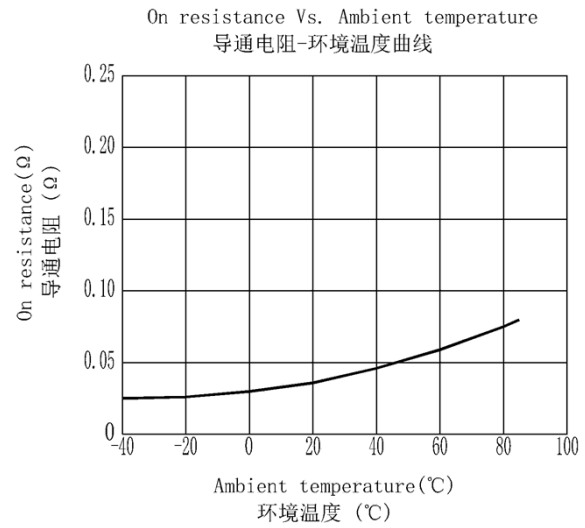
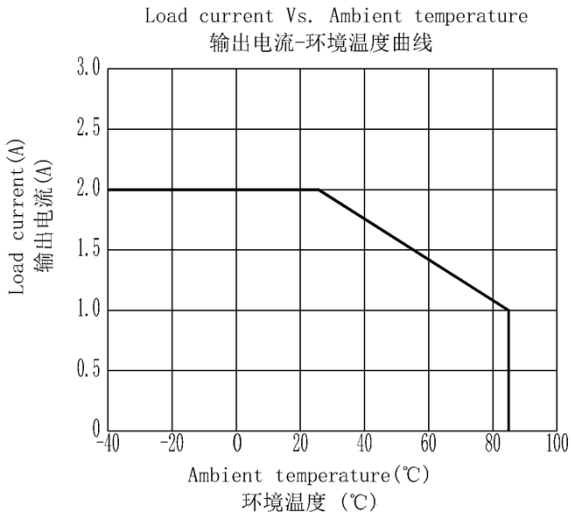
通讯地址: 陕西省西安市国家民用航天产业基地航天中路385号众创广场11层1101.1102.1104室

生产地址: 陕西省宝鸡市陈仓区群力路1号 邮政编码: 721300

电话: (0917)-6293969 18609177833

传真: (0917)-6293969

Reference Data 曲线图



通讯地址: 陕西省西安市国家民用航天产业基地航天中路385号众创广场11层1101.1102.1104室

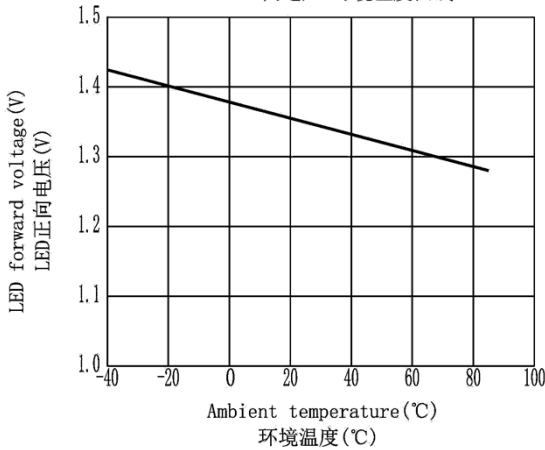
生产地址: 陕西省宝鸡市陈仓区群力路1号 邮政编码: 721300

电话: (0917)-6293969 18609177833 传真: (0917)-6293969

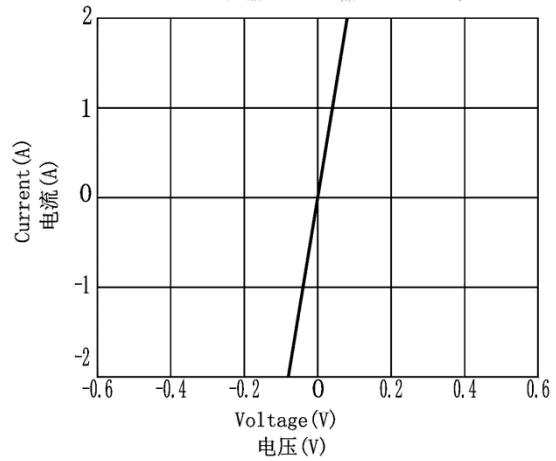


BCY211S 型光 MOS 继电器

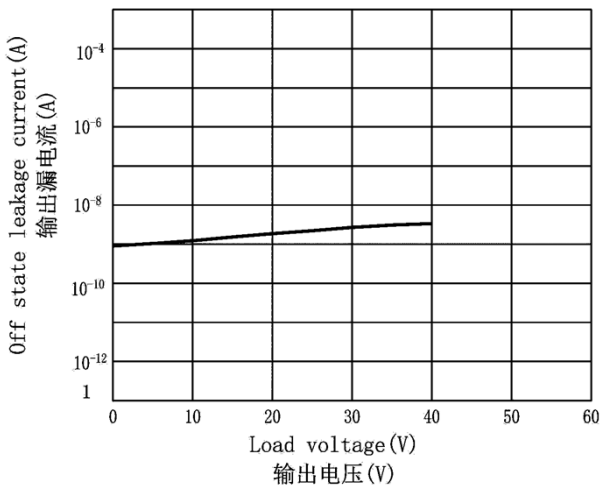
LED forward voltage Vs. Ambient temperature
LED正向电压-环境温度曲线



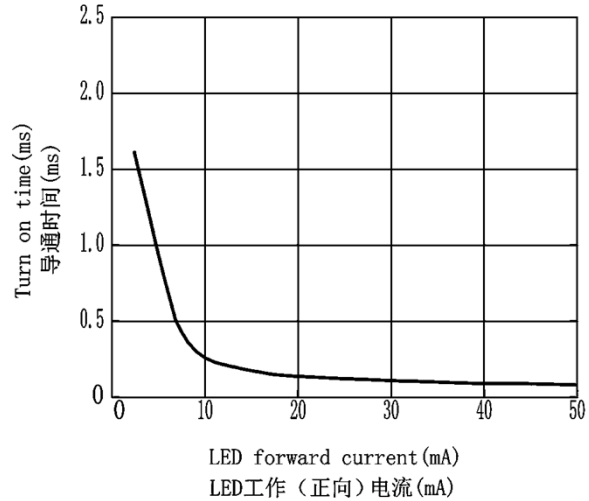
Voltage Vs. current characteristics of output at MOS
MOS管输出电压-输出电流曲线



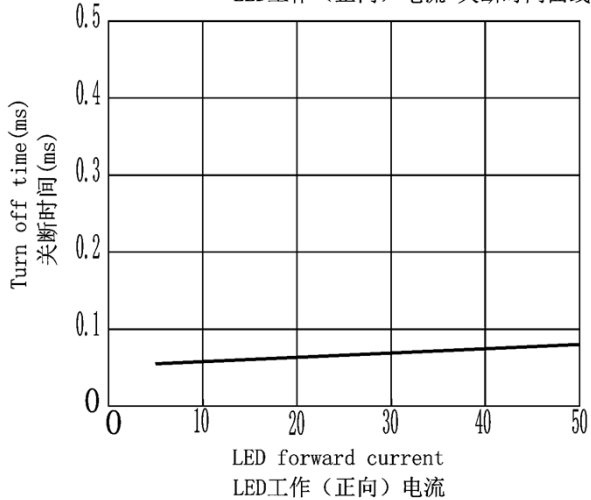
Off state leakage current Vs. Load voltage
输出漏电流-输出电压



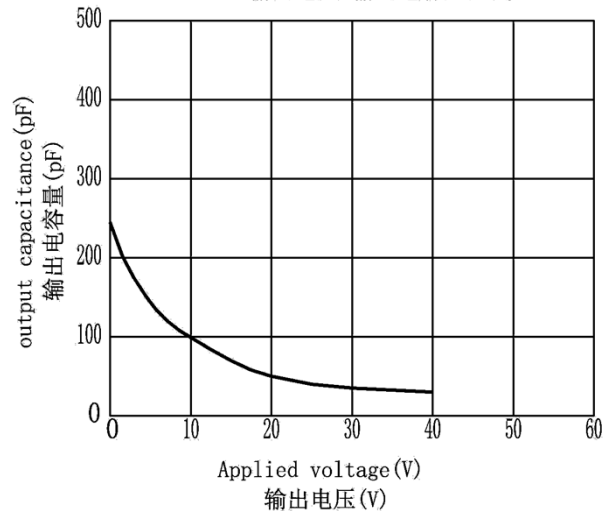
LED forward current Vs. turn on time characteristics
LED工作(正向)电流-导通时间曲线



LED forward current Vs. Turn off time characteristics
LED工作(正向)电流-关断时间曲线



Applied voltage Vs. output capacitance characteristics
输出电压-输出电容量曲线



通讯地址: 陕西省西安市国家民用航天产业基地航天中路385号众创广场11层1101.1102.1104室

生产地址: 陕西省宝鸡市陈仓区群力路1号 邮政编码: 721300

电话: (0917)-6293969 18609177833 传真: (0917)-6293969